

**BASEMENT LIGHTING AND POWER PLAN** SCALE 1/8"=1'-0"

**NOTES**

- FURNISH AND INSTALL 4 SPD-BACK FOR SERVICE ATTACHMENT.
- 400A, 3P, 5W, 240 V, NEMA 1 WITH 400A FUSES AND METER BY ELECTRICAL.
3. CAN P.E.S. INS. CALLED BY ELECTRICAL.
- PANEL SHALL BE 1 SQ. 3 TYPE NRDB 20" X 40" WITH 20" X 40" X 1/2" THICK WITH BE 4" RIGID STEEL WITH PULL WIRE FROM SERVICE ATTACHMENT POINT TO TBB. SWITCHES SHALL BE 150.
- 83 NUBBELL # 1203
- PLAT. NUBBELL # 2282
- WIRE SHALL BE COPPER.
- EXHAUST FANS (500 W.M.H. EQUIPMENT ARE BY OTHERS ON EACH FLOOR TO BE INSTALLED FOR A COMPLETE INSTALLATION. DRAWINGS SHALL BE IN PERFORMANCE WITH N.E.C.
- DEAD-END WATER BID.
- ALL LIGHT FIXTURES WITH LAMPS ARE FURNISHED BY OWNER, INSTALLED BY E.C.

**CONSTRUCTION NOTES**

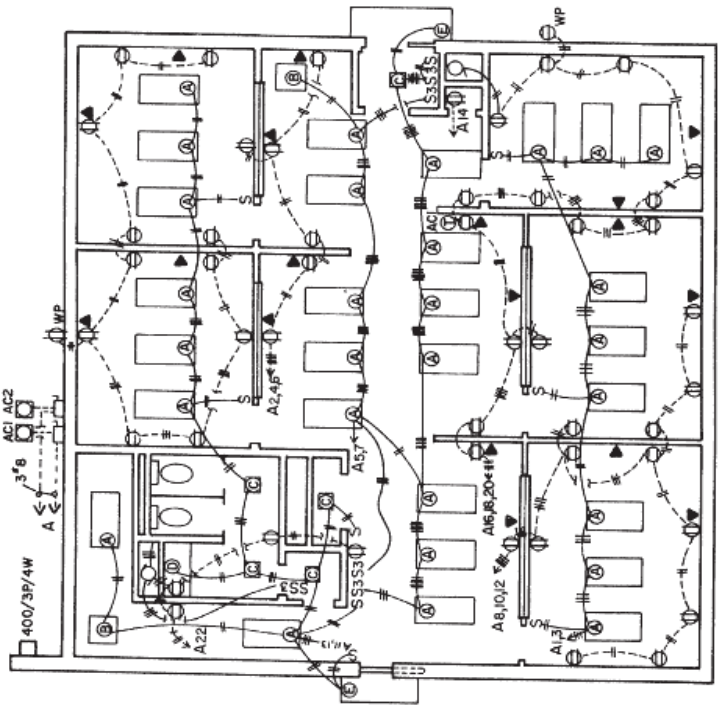
- FLOOR HEIGHT 10'0"
- CEILING HEIGHT 9'0"
- CEILING 12" X 4" LAY-IN TILE
- WALLS 1/2" DRY WALL
- PARTITIONS ARE METAL STUDS AND 1/2" DRY WALL.

**COLOR CODE SPECIFICATION**

- PHASE A: BLACK
- PHASE B: RED
- PHASE C: BLUE
- NEUTRAL: N: WHITE

MARK	CAT. NO.	MOUNTING	LAMPS
A	LITHONIA 2824D A12	RECESSED	2-F40T12/R56/RW
B	LITHONIA 2824D A12	RECESSED	2-F40U/CW
C	ART METAL 15-101-5WS	RECESSED	1-150 IF
D	ART METAL 3549	SURFACE	2-75 IF
E	ART METAL 3670	SURFACE	1-150 IF
F	SAFELITE	SURFACE	1-151F
G	LITHONIA C296	SURFACE	2-F40T12/CW/SL
H	LITHONIA SIGOTS	SURFACE	1-F40T12/RW
J	ART METAL R94	RECESSED	1-100 IF
K	RETELES	SURFACE	1-100 IF

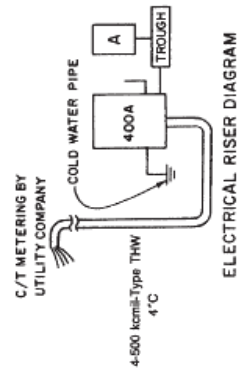
MINIMUM FLEXIBLE METAL CONDUIT TO RECESSED FIXTURES 4"



**FIRST FLOOR LIGHTING & POWER PLAN** SCALE 1/8"=1'-0"

**LEGEND**

- EMT RIGID METAL CONDUIT
- S.P. SWITCH
- 3-WAY SWITCH
- DUPLEX RECEPTACLE
- TELEPHONE
- EXHAUST FAN
- 3/4" TYPICAL TELEPHONE
- 1" TO TBB



**ELECTRICAL RISER DIAGRAM**

PANEL A	225 AMP BUS	VOLTAGE	120/208	3 Ø 2 W	MOUNTING	
					FLUSH	SURFACE
LOAD SERVED	WIRE AND CONDUIT SIZE	BKR SIZE	BKR SIZE	CONDUIT	LOAD SERVED	RECEPTACLE
LIGHTS	20	1	2	20		
LIGHTS	3	3	4	16		
LIGHTS	5	5	6	18		
LIGHTS	7	7	8	20		
LIGHTS	9	9	10	22		
LIGHTS	11	11	12	24		
LIGHTS	13	13	14	26		
LIGHTS	15	15	16	28		
LIGHTS	17	17	18	30		
LIGHTS	19	19	20	32		
LIGHTS	21	21	22	34		
LIGHTS	23	23	24	36		
LIGHTS	25	25	26	38		
LIGHTS	27	27	28	40		
LIGHTS	29	29	30	42		
LIGHTS	31	31	32	44		
LIGHTS	33	33	34	46		
LIGHTS	35	35	36	48		
LIGHTS	37	37	38	50		
LIGHTS	39	39	40	52		
LIGHTS	41	41	42	54		
LIGHTS	43	43	44	56		
LIGHTS	45	45	46	58		
LIGHTS	47	47	48	60		
LIGHTS	49	49	50	62		
LIGHTS	51	51	52	64		
LIGHTS	53	53	54	66		
LIGHTS	55	55	56	68		
LIGHTS	57	57	58	70		
LIGHTS	59	59	60	72		
LIGHTS	61	61	62	74		
LIGHTS	63	63	64	76		
LIGHTS	65	65	66	78		
LIGHTS	67	67	68	80		
LIGHTS	69	69	70	82		
LIGHTS	71	71	72	84		
LIGHTS	73	73	74	86		
LIGHTS	75	75	76	88		
LIGHTS	77	77	78	90		
LIGHTS	79	79	80	92		
LIGHTS	81	81	82	94		
LIGHTS	83	83	84	96		
LIGHTS	85	85	86	98		
LIGHTS	87	87	88	100		
LIGHTS	89	89	90	102		
LIGHTS	91	91	92	104		
LIGHTS	93	93	94	106		
LIGHTS	95	95	96	108		
LIGHTS	97	97	98	110		
LIGHTS	99	99	100	112		
LIGHTS	101	101	102	114		
LIGHTS	103	103	104	116		
LIGHTS	105	105	106	118		
LIGHTS	107	107	108	120		
LIGHTS	109	109	110	122		
LIGHTS	111	111	112	124		
LIGHTS	113	113	114	126		
LIGHTS	115	115	116	128		
LIGHTS	117	117	118	130		
LIGHTS	119	119	120	132		
LIGHTS	121	121	122	134		
LIGHTS	123	123	124	136		
LIGHTS	125	125	126	138		
LIGHTS	127	127	128	140		
LIGHTS	129	129	130	142		
LIGHTS	131	131	132	144		
LIGHTS	133	133	134	146		
LIGHTS	135	135	136	148		
LIGHTS	137	137	138	150		
LIGHTS	139	139	140	152		
LIGHTS	141	141	142	154		
LIGHTS	143	143	144	156		
LIGHTS	145	145	146	158		
LIGHTS	147	147	148	160		
LIGHTS	149	149	150	162		
LIGHTS	151	151	152	164		
LIGHTS	153	153	154	166		
LIGHTS	155	155	156	168		
LIGHTS	157	157	158	170		
LIGHTS	159	159	160	172		
LIGHTS	161	161	162	174		
LIGHTS	163	163	164	176		
LIGHTS	165	165	166	178		
LIGHTS	167	167	168	180		
LIGHTS	169	169	170	182		
LIGHTS	171	171	172	184		
LIGHTS	173	173	174	186		
LIGHTS	175	175	176	188		
LIGHTS	177	177	178	190		
LIGHTS	179	179	180	192		
LIGHTS	181	181	182	194		
LIGHTS	183	183	184	196		
LIGHTS	185	185	186	198		
LIGHTS	187	187	188	200		
LIGHTS	189	189	190	202		
LIGHTS	191	191	192	204		
LIGHTS	193	193	194	206		
LIGHTS	195	195	196	208		
LIGHTS	197	197	198	210		
LIGHTS	199	199	200	212		
LIGHTS	201	201	202	214		
LIGHTS	203	203	204	216		
LIGHTS	205	205	206	218		
LIGHTS	207	207	208	220		
LIGHTS	209	209	210	222		
LIGHTS	211	211	212	224		
LIGHTS	213	213	214	226		
LIGHTS	215	215	216	228		
LIGHTS	217	217	218	230		
LIGHTS	219	219	220	232		
LIGHTS	221	221	222	234		
LIGHTS	223	223	224	236		
LIGHTS	225	225	226	238		
LIGHTS	227	227	228	240		
LIGHTS	229	229	230	242		
LIGHTS	231	231	232	244		
LIGHTS	233	233	234	246		
LIGHTS	235	235	236	248		
LIGHTS	237	237	238	250		
LIGHTS	239	239	240	252		
LIGHTS	241	241	242	254		
LIGHTS	243	243	244	256		
LIGHTS	245	245	246	258		
LIGHTS	247	247	248	260		
LIGHTS	249	249	250	262		
LIGHTS	251	251	252	264		
LIGHTS	253	253	254	266		
LIGHTS	255	255	256	268		
LIGHTS	257	257	258	270		
LIGHTS	259	259	260	272		
LIGHTS	261	261	262	274		
LIGHTS	263	263	264	276		
LIGHTS	265	265	266	278		
LIGHTS	267	267	268	280		
LIGHTS	269	269	270	282		
LIGHTS	271	271	272	284		
LIGHTS	273	273	274	286		
LIGHTS	275	275	276	288		
LIGHTS	277	277	278	290		
LIGHTS	279	279	280	292		
LIGHTS	281	281	282	294		
LIGHTS	283	283	284	296		
LIGHTS	285	285	286	298		
LIGHTS	287	287	288	300		
LIGHTS	289	289	290	302		
LIGHTS	291	291	292	304		
LIGHTS	293	293	294	306		
LIGHTS	295	295	296	308		
LIGHTS	297	297	298	310		
LIGHTS	299	299	300	312		
LIGHTS	301	301	302	314		
LIGHTS	303	303	304	316		
LIGHTS	305	305	306	318		
LIGHTS	307	307	308	320		
LIGHTS	309	309	310	322		
LIGHTS	311	311	312	324		
LIGHTS	313	313	314	326		
LIGHTS	315	315	316	328		
LIGHTS	317	317	318	330		
LIGHTS</						